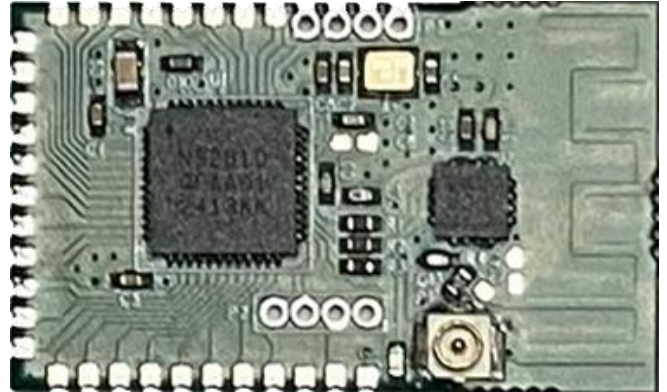


# LC-512E

## *Wireless Battery Light Solution*

- PCB size is only 27 x 16 mm, 1.27 pitch stamp pads
- Integrated wireless DMX transceiver (supports WIDMX, G3, G4, G4S, CRMX, CRMX2) and built-in PCB antenna
- SPI display interface, suitable for OLED / TFT
- 6 PWM outputs
- Infrared receiver decoder
- Smart sound control for music visualization(FFT)
- Real-time measurement and display of signal strength, temperature and battery voltage
- Users can edit the chase effect, master-slave mode



## Overview

LC-512E is an ideal solution for wireless battery lights. It integrates a professional wireless transceiver, supports all wireless protocols and has the function of receiving signal strength indication.

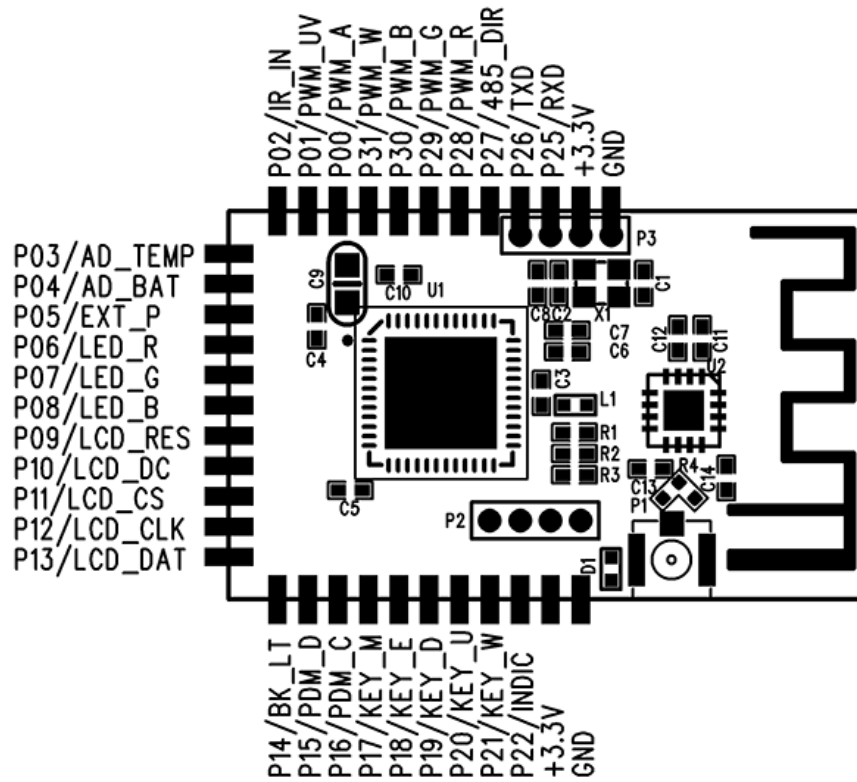
LC-512E has 6 PWM outputs, professional voice control module, accurate battery indicator, touch button and infrared decoding function. All of these are integrated on a 54 x 31 mm PCB board. Make your design more flexible and install more convenient.

LC-512E supports RMD protocol, which is convenient for remotely modifying fixture parameters and querying fixture status.

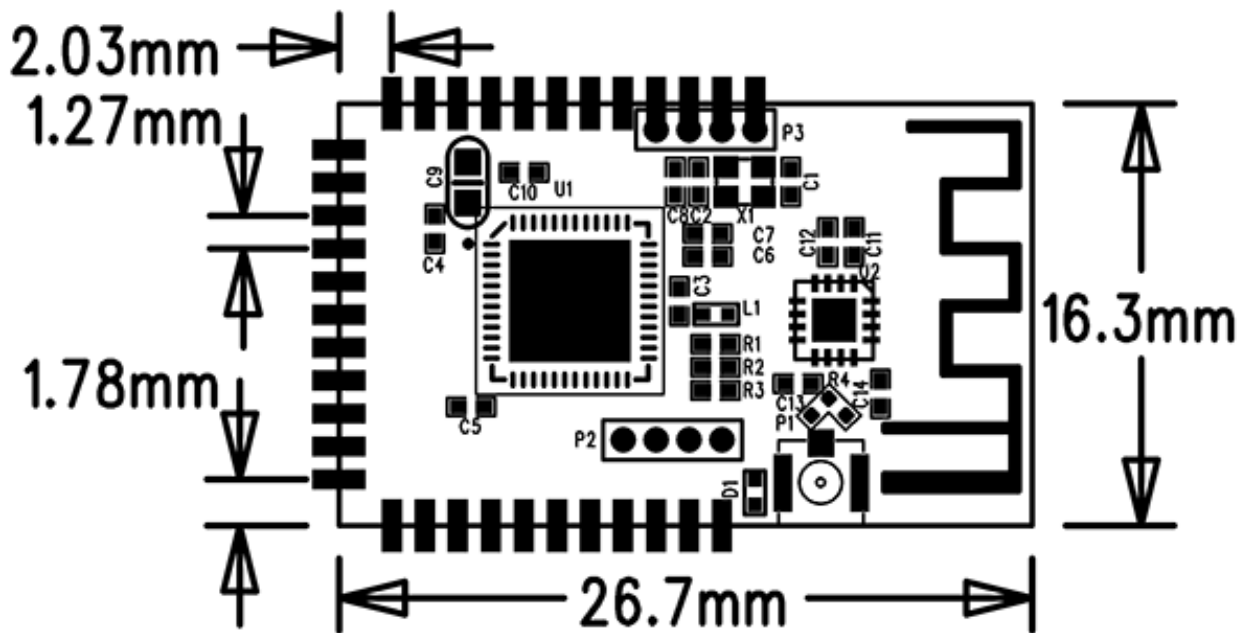
## Application

- DMX wireless battery light solution

## Pinout



## Dimensional drawings



## Specifications

### Weight and Dimension

Dimension: 27 x 16 mm

Weight: 5 g

### System Information

CPU: 32-bit ARM Core (Cortex-M4)

### Radio Parameters

Range: 600 meters (line-of-sight)

Frequency: 2.402 - 2.480GHz, ISM, 79 channels

Spread Spectrum: FHSS, 1100 hops / sec

Modulation: GFSK

Maximum Transmit Power: 22dBm

Receiver Sensitivity: -96dBm

### DMX Signal Interface

TTL

### Environmental Limits

Operating Temperature: -40 ~ 85 °C

Storage Temperature: -65 ~ 150 °C

Ambient Relative Humidity: 5 to 95% (non-condensing)

### Power Requirements

Power Input: DC 3.3V, ±5%

Power Consumption: 350 mA@3.3V DC max.

### Reliability

Automatic Reboot Trigger: Built-in WDT (watchdog timer)

### Warranty

Warranty: One-Year Limited Warranty